



CE

RANDOX

RX daytona⁺

A COMPACT, FULLY AUTOMATED SOLUTION FOR HIGH QUALITY CLINICAL CHEMISTRY TESTING



SYSTEM OVERVIEW

The RX daytona+ is a bench-top, fully automated, random access clinical chemistry analyser capable of performing routine & specialised testing and emergency STAT sampling. With the world leading RX series test menu, the RX daytona+ provides excellent opportunity for consolidation and is perfect for use as a back up analyser in the larger laboratory.

REAGENT CAROUSEL



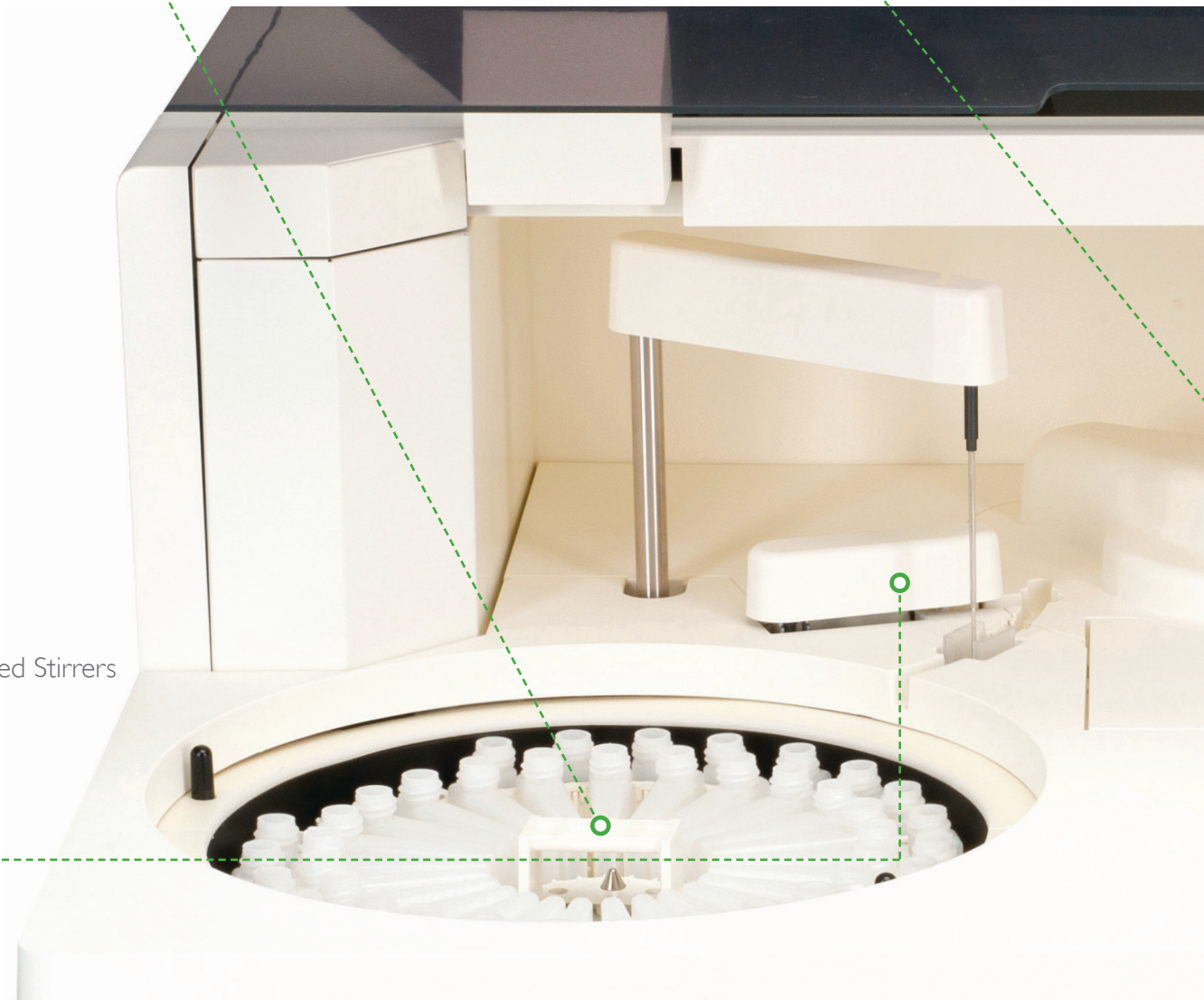
- Reagents cooling 8-15 °C
- 50 cooled positions for 20ml & 70ml bottles
- Automatic barcode for reagent identification

CUVETTES



- 72 reaction cuvettes (semi-permanent)
- Cuvettes life-span: 3 – 6 Months
- Minimum reaction volume of 100µl
- Minimum reaction volume of 350µl

- Dual 5 Speed Stirrers



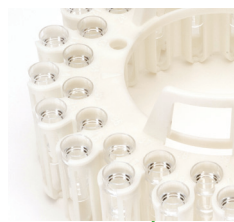
The RX daytona+ provides high quality testing on a compact, easy to use clinical chemistry analyser for accurate results you can trust.

WASH STATION

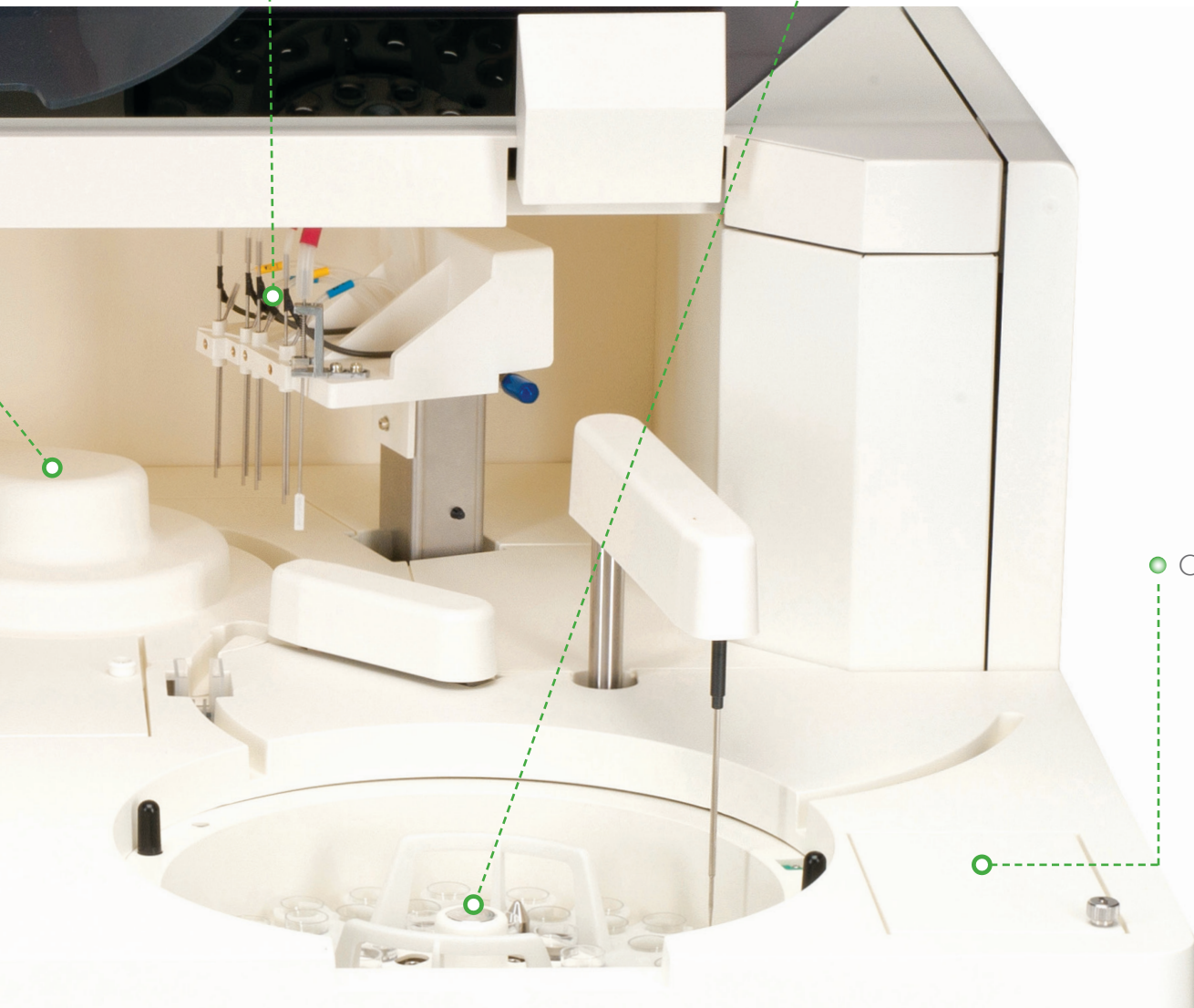


- 12 stage washing process
- Includes acid, alkali and pure water wash steps
- Stations 1 - 4 have liquid level sensors to prevent cuvette overflows

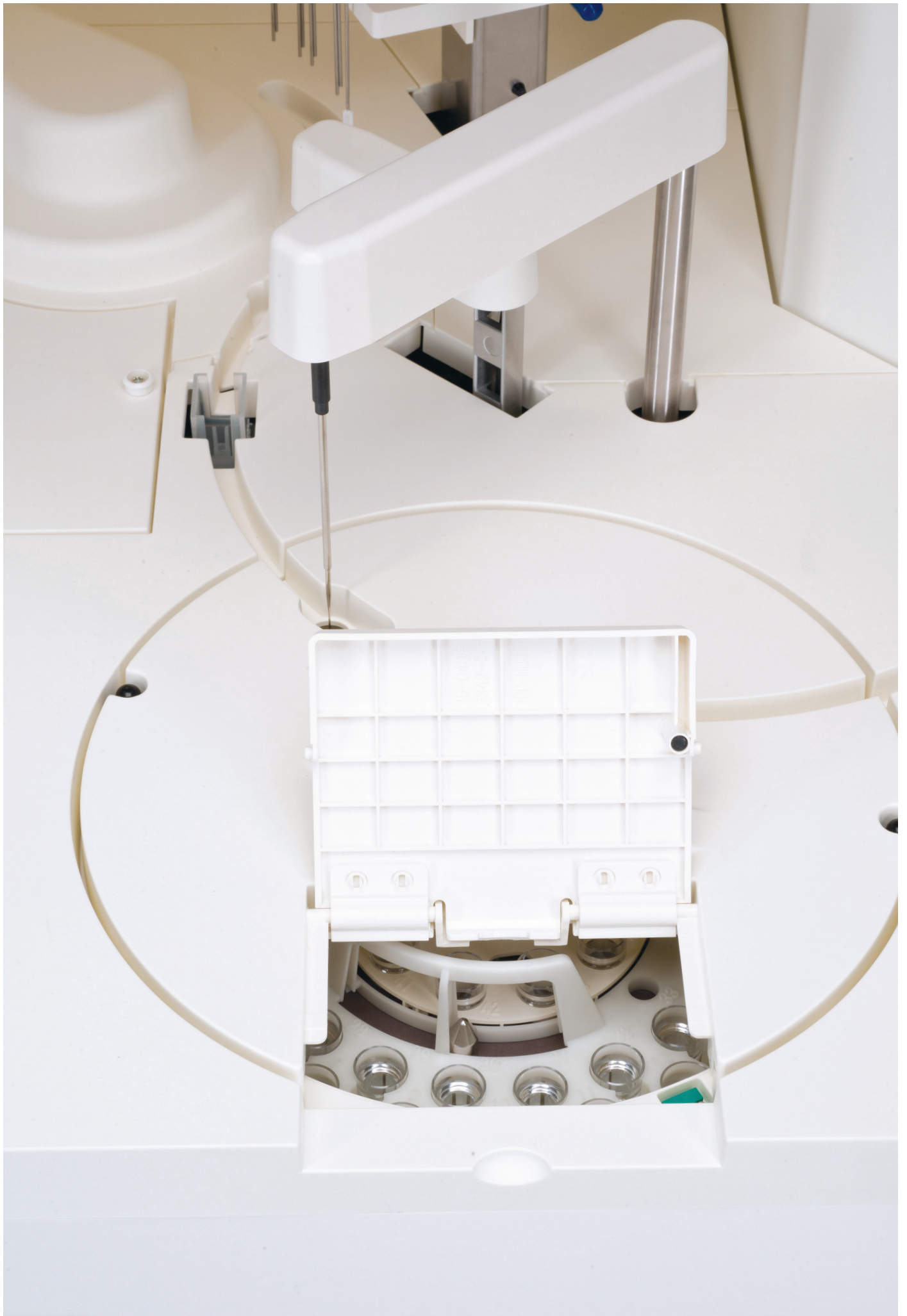
SAMPLE CAROUSEL



- Sample interruption for addition of emergency samples
- Barcode sample identification
- 100µl in standard or primary tubes - 50µl in paediatric cups



- Optional ISE unit



RX daytona⁺

- Fully automated chemistry analyser
- 270 photometric tests per hour and up to 450 including ISE
- Reagent carousel with 50 cooled positions
- Universal sample carousel with 40 positions and 10 control/calibrator positions
- Low water consumption of just 5 litres per hour
- Intuitive icon based user friendly software (Windows[®] 7)
- Dual 5 speed stirrers optimised for each assay ensuring better performance
- Storage of up to 30,000 patient reports with search facility
- Liquid level, clot & crash detection
- Unique emergency loading port allows emergency samples to be analysed quickly and easily during run
- Low reagent volume - R1: 20 - 250 μ l (1 μ l increments) R2: 20 - 180 μ l (1 μ l increments) & sample volume of just 1.5 μ l (0.1 μ l increments)
- Barcode readers for both sample and reagent identification

■ Why RX daytona+ ?



● HIGHLY ACCURATE TESTING

- Separate sample and reagent pipettes minimise carryover
- Dedicated micropipettes are equipped with liquid level sensors and crash detection
- Dual five speed stirrers optimise mixing for each assay
- Serum indices detect lipaemic, icteric and haemolytic samples, building confidence in results and reducing the need for expensive repeats

● EASE OF USE

- Easy to use Windows® based software
- Just one click opens the emergency sample ordering screen for rapid STAT testing
- Barcode readers for both sample and reagent identification
- Ability to register samples for routine measurement with an auto-template function
- Symbol based software for ease of use

● SUPERIOR PERFORMANCE

- Sensitive clot detection sensor detects clots such as fibrin at the sample pipette
- 72 cuvettes onboard with cuvette check function ensuring only clean and viable reaction vessels are reused
- Built in inventory management system automatically calculates remaining reagent volume and the number of tests available

● OPTIMUM LABORATORY EFFICIENCY

- Low minimum reaction volume of 100µl improves cost-effectiveness and reduces waste
- Automatic test re-run function saves time and reduces risk of human error
- Automatic sample dilution
- Automatic wake up and sleep functionality

● TIME AND COST SAVINGS

- Minimal maintenance required
- Extensive menu allows consolidation of testing
- Economic platform with low water consumption of only 5 litres per hour

● UNRIVALLED QC CAPABILITIES

- Generation of Levey-Jennings charts, calibration curves and QC statistics for reliable results
- View QC history

● FLEXIBILITY

- 12 wavelengths generated via diffraction grating: 340, 380, 415, 450, 510, 546, 570, 600, 660, 700, 750 and 800nm
- Capable of running monochromatic, bi-chromatic, endpoint, kinetic, ISE, sample blanking and reagent blanking assays
- 7 different calibration option available including; Factor, Linear, Point to point, Log-logit, Exponential, Spline and Spline 2

● EXTENSIVE DEDICATED TEST MENU

- Wide range of tests available from a sole supplier, including routine and unique assays
- Ability to run specific proteins removes the need for a separate nephelometry system

TEST MENU

CLINICAL

AUTOIMMUNE:

Complement Component 3
Complement Component 4
CRP
CRP Full Range (0.3-160mg/l)
CRP High Sensitivity
IgA
IgE
IgG
IgM
Rheumatoid Factor

BASIC METABOLIC PROFILE:

Calcium
CO₂ Total
Chloride
Creatinine Enzymatic
Creatinine (Jaffe)
Glucose
Potassium
Sodium
Urea

BONE PROFILE:

Alkaline Phosphatase
Calcium
Phosphorus
Total Protein

CARDIAC:

Cholesterol
CK-MB
CK-NAC
CRP
CRP Full Range (0.3-160mg/l)
CRP High Sensitivity
Digoxin
Direct HDL Cholesterol
Direct LDL Cholesterol
H-FABP
Homocysteine
Lipoprotein (a)
Myoglobin
sLDL
Triglycerides
TxB Cardio

COMPREHENSIVE METABOLIC PROFILE:

Albumin
Alkaline Phosphatase
ALT
AST (GOT)
Direct Bilirubin
Calcium

Chloride
CO₂ Total
Creatinine Enzymatic
Creatinine (Jaffe)
Glucose
Lactate
Potassium
Sodium
Total Bilirubin
Total Protein
Urea

DIABETES:

Adiponectin
Cholesterol
Creatinine Enzymatic
Creatinine (Jaffe)
Cystatin C
Direct HDL Cholesterol
Direct LDL Cholesterol
Fructosamine
Glucose
Glycerol
HbA1c/Hb
Microalbumin
NEFA (Non-Esterified Fatty Acids)
Ranbut (Hydroxybutyrate)
Total Protein
Triglycerides
Urinary Protein

ELECTROLYTES:

Calcium
Chloride (Nondirect)
CO₂ Total
Lithium
Magnesium
Potassium (Nondirect)
Sodium (Nondirect)

HAEMOLYTIC ANAEMIA:

G6P-DH
Haptoglobin
LDH

HEPATIC FUNCTION:

Albumin
Aldolase
Alkaline Phosphatase
Alpha-I Antitrypsin
ALT
Ammonia
AST (GOT)
Cholinesterase

Complement Component 3
Complement Component 4
Direct Bilirubin
Gamma GT
GLDH
Glycerol
Haptoglobin
IgA
IgG
IgM
Iron (UIBC)
LAP
LDH
Total Bilirubin
Total Protein
Transferrin
Transthyretin (Prealbumin)

INFLAMMATION AND INFECTION:

Alpha-I Acid Glycoprotein
ASO
CRP
Lactate
Rheumatoid Factor

LIPIDS:

Apolipoprotein A-I
Apolipoprotein AII
Apolipoprotein B
Apolipoprotein CII
Apolipoprotein CIII
Apolipoprotein E
Cholesterol
Direct HDL Cholesterol
Direct LDL Cholesterol
Lipoprotein (a)
sLDL
Triglycerides

NEONATAL SCREENING:

Alpha-I Antitrypsin
CRP
CRP Full Range (0.3-160mg/l)
CRP High Sensitivity
IgE
Transthyretin (Prealbumin)

NEUROLOGICAL DISORDERS (CSF):

IgA
IgG
IgM

NUTRITIONAL STATUS:

Albumin
Copper
Ferritin
Iron
Iron (UIBC)
Lipase
Magnesium
Potassium
TIBC
Transferrin
Transthyretin (Prealbumin)
Zinc

PANCREATIC FUNCTION:

Amylase
Glucose
LDH
Lipase
Pancreatic Amylase

RENAL FUNCTION:

Albumin
Ammonia
Beta-2 Microglobulin
Calcium
Chloride
Creatinine Enzymatic
Creatinine (Jaffe)
Cystatin C
Glucose
HbA1c/Hb
IgG
LDH
Magnesium
Microalbumin
Potassium
Sodium
Phosphorus (Inorganic)
Urinary Protein
Urea
Uric Acid

VETERINARY

Albumin	CK-NAC	Lactate	Total Protein
Alkaline phosphatase	CO2 Total	Lactate dehydrogenase	Triglycerides
ALT (GPT)	Copper	LDL	Urea
Aldolase	Creatinine	Lipase	Uric Acid
Ammonia	Canine CRP	Magnesium	Urinary protein
Amylase	CRP	NEFA (Non-esterified fatty acids)	Zinc
AST (GOT)	Fructosamine	Phosphorus (Inorganic)	
Bile acids	Gamma-GT	Potassium	
Bilirubin	GLDH	Ranbut (Hydroxybutyrate)	
Calcium	Glucose	Ransel (Glutathione peroxidase)	
Chloride	Glycerol	Ransod (Superoxide dismutase)	
Cholesterol	HDL	Sodium	
Cholinesterase (Butyryl)	Iron (UIBC)		

TOXICOLOGY

THERAPEUTIC DRUGS:

Acetaminophen	Phenobarbitol
Carbamazepine	Phenytoin
Digoxin	Salicylate
Gentamicin	Theophylline
Lithium	Valproic Acid

DRUGS OF ABUSE:

Amphetamines	Ecstasy
Barbiturates	EDDP
Benzodiazepines	Ethanol
Cannabinoids	Methadone
Cocaine metabolite	Opiates

PROTEIN

SPECIFIC PROTEINS:

Alpha-1 Antitrypsin	ASO	Cystatin C	IgM
Alpha-1 Acid Glycoprotein	Beta-2 Microglobulin	Ferritin	Lipoprotein (a)
Apolipoprotein A-1	Ceruloplasmin	Fructosamine	Microalbumin
Apolipoprotein AII	Complement Component 3	Haptoglobin	Myoglobin
Apolipoprotein B	Complement Component 4	HbA1c/Hb	Rheumatoid Factor
Apolipoprotein CII	CRP	IgA	Transthyretin (Prealbumin)
Apolipoprotein CIII	CRP Full Range (0.3-160mg/l)	IgE	Transferrin
Apolipoprotein E	CRP High Sensitivity	IgG	

RESEARCH

ANTIOXIDANTS:

Albumin
Bilirubin
Ferritin
Glutathione Reductase
Ransel (Glutathione Peroxidase)
Ransod (Superoxide Dismutase)
TIBC
Total Antioxidant Status
Transferrin
Uric Acid

FOOD AND WINE TESTING:

Acetic acid
Ammonia
Copper
Ethanol
Glucose/fructose
Lactic acid
Malic acid
NOPA
Potassium
TAS
Total SO ₂

BIOTECHNOLOGY:

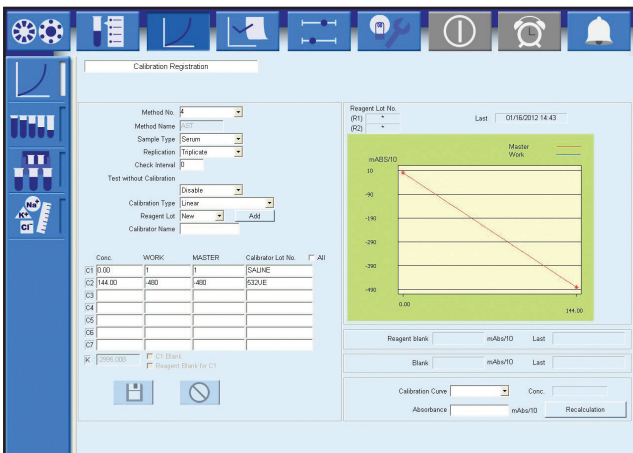
Glutamate
Glutamine

SPECIALITY:

Acid phosphatase

RX daytona+ Software

The symbol based intuitive software allows easy access to information and control of operations from the main screen with informative tabs



Calibration Screen

CALIBRATION

- Sets calibrator serial dilution and displays multipoint calibration curves

QUALITY CONTROL

- Generation of Levey-Jennings charts, calibration curves and QC statistics offer simple assessment of results

RUN MONITOR

- Displays full patient demographics
- View status in real time including time to completion
- Indication of amounts of tests remaining

Pos	Reagent Name	Reagent Type	Lot	Size	Vol(mL)	Tests	Method	Total
01	SALINE	D1	*	70	66.5			
02	UA	R1	*	70	42.3	369	UA	369
03	CHOL	R1	*	70	26.5	176	CHOL	176
04	ALP	R1	*	70	37.3	203		203
05	AST	R1	*	70	18.7	153	AST	124
06	GGT	R1	*	70	43.0	374	GGT	332
07	ALT	R1	*	70	42.4	369	ALT	306
08	GLU	R1	*	70	27.1	164	GLU	164
09	TRIGS	R1	*	70	32.3	239	TRIGS	236
10	CREAT	R1	*	70	43.0	373	CREAT	373
11	CREAT	R2	*	70	23.3	166	CREAT	373
12	ALB	R1	*	70	6.5	45	ALB	45
13	Ca Ars	R1	*	40	38.1	161		161
14	AWASH	D1c	*	70	15.7			
15	TP	R1	*	70	43.2	374	TP	375
16	TP	R2	*	70	37.2	373	TP	375
17	AST2	R1	*	70	49.3	439	AST	369
18								
19								
20								
21								

Inventory Screen

INVENTORY

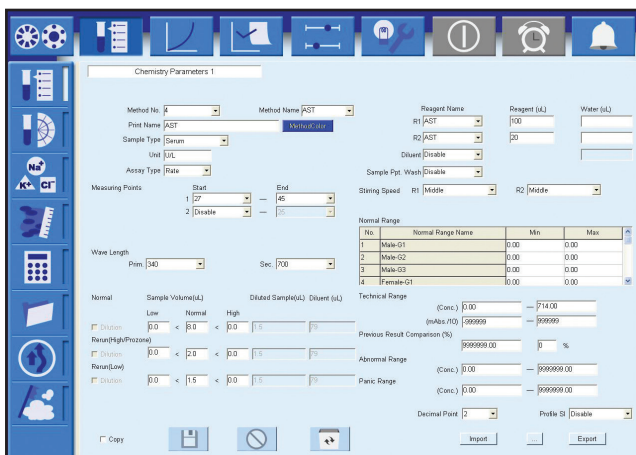
- Automatically calculates remaining reagent volume and the number of tests available and stability

MAINTENANCE

- 5minutes minimal daily maintenance required

RESULTS

- Download and print results
- Send to host automatically



Parameter Screen

● CHEMISTRY PARAMETERS

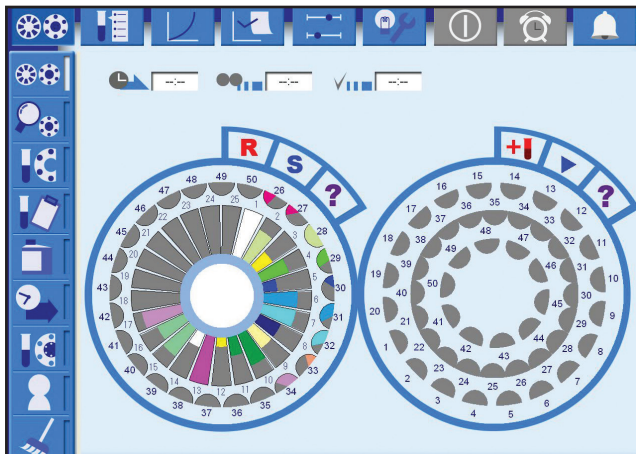
- Enables sample dilution and test re-runs
- Set up to 20 test profiles and define order of analysis

● CONNECTIVITY

- Software capable of connecting to LIMS system via ASTM standard

● EASY TO FOLLOW REPORTS

- View real time results status, including time to completion



Run Monitor Screen

● USER - FRIENDLY INTERFACE

- Familiar Microsoft Windows® based software offers ease of navigation
- Intuitive symbol based software results in minimal training requirements and enhanced productivity

SPECIFICATIONS

PHYSICAL DIMENSION

Height	625mm
Depth	670mm
Length	870mm
Weight	120kg

PERFORMANCE CHARACTERISTICS

Throughput	270 tests per hour; 450 tests per hour with ISE
Analyser Type	Compact fully automated random access bench top clinical analyser
Assay Tests	Monochromatic, bi-chromatic, endpoint, kinetic, sample and reagent blanking and ISE
Maintenance	Daily maintenance-less than 5 minutes. No rear access required. Simple twice yearly preventative maintenance service.

REAGENT & SAMPLE SYSTEM

Data Management	Storage of up to 30,000 patient reports, search facility
Test Channels	50 photometric channels, 3 direct ISE
Sleep mode	User defined sleep mode capabilities with automatic wash and instrument prep
Maintenance	Minimal daily maintenance. No rear access required. Simple twice yearly preventative maintenance
Reagent Pipette	Dedicated reagent micropipette with liquid level sensor and crash detection
Reagent Volume	R1: 20 to 250 μ l (1 μ l increments) R2: 20 to 180 μ l (1 μ l increments)
Reagent Capacity	Removable turntable with 50 cooled positions for 20ml and 70ml bottles
Reagent Cooling	8 to 15°C
Reagent Identification	Barcode reagent identification
Reagent Inventory	Calculation of remaining reagent volume and tests available. Alert for shortage, expired
Sample Addition	Sampling interruption for addition of samples
Sample Capacity	Removable turntable with 40 positions for samples, calibrators and controls
Sample Dead Volume	100 μ l in standard or primary tubes. 50 μ l in paediatric cups
Sample Dilution	Pre-dilution and automatic re-assay with diluted, reduced or increased sample volume
Sample Identification	Barcode sample identification
Sample Pipette	Dedicated sample micropipette with liquid level sensor, crash protection and clot detection
Sample Tube size	Multiple primary tube sizes (diameter 12 to 16mm, height 55 to 100mm) Paediatric cups
Sample Type	Serum, plasma, urine & supernatants
Sample volume	1.5 to 35 μ l (0.1 μ l increments)
STAT Sampling	STAT samples can be added immediately via emergency loading port

REACTION SYSTEM

Reaction Time	10 minutes (R1: 5 min. + R2: 5 min.)
Reaction Volume	100 to 350 μ l
Stirring Speed	5 speed levels available
Stirring System	Dual 5 speed stick type rotating stirrers
Temperature Control	Dry bath
Water Consumption	Maximum 5 litres per hour

Water Requirements	NCCLS type 1 or 2 purified water supply
Wash Unit	12 stage washing process
Cuvettes	72 semi-permanent cuvettes
Incubator Temperature	37°C ± 0.1°C
Cycle Time	13 seconds

OPTICAL SYSTEM

Detector Method	Direct absorbance in cuvette (bi-chromatic and monochromatic)
Detection Principal	12 wavelengths generated via diffraction grating: 340, 380, 415, 450, 510, 546, 570, 600, 660, 700, 750 and 800nm
ISE Unit	Optional ISE unit available
Light Source	Halogen tungsten lamp air cooled by fan

CALIBRATION & QC

Quality Control	Interactive Levey Jennings charts, daily, monthly and batch QC with data archiving. Automatic QC and automatic calibration
Calibration Principal	Factor; Linear; Point to point, Log-logit, Exponential, Spline and Spline 2

POWER & CONNECTIVITY

Power Requirement	AC100V to 120V, 6.5A (Max.) AC200 to 230V, 3.3A (Max.) 50/60Hz
Power Consumption	650VA
Permissible Voltage Variation	± 10% (Max.)
LIMS Connectivity	Bi-directional ASTM Standard (RS232 connection)

OPERATING SYSTEM

Operator Interface	Windows® based software
--------------------	-------------------------

ORDERING INFORMATION

RX daytona plus analyser without ISE	RX4041
RX daytona plus analyser with ISE	RX4040





A-Z TEST MENU

Acetaminophen
Acetic Acid
Acid phosphatase
Adiponectin
Albumin
Aldolase
Alkaline Phosphatase
Alpha-1 Acid Glycoprotein
Alpha-1 Antitrypsin
ALT
ALT (GPT)
Ammonia
Amphetamines
Amylase
Apolipoprotein A-I
Apolipoprotein All
Apolipoprotein B
Apolipoprotein CII
Apolipoprotein CIII
Apolipoprotein E
ASO
AST (GOT)
Barbiturates
Benzodiazepines
Beta-2 Microglobulin
Bile Acids
Bilirubin (Direct & Total)
Calcium
Canine CRP
Cannabinoids
Carbamazepine
Ceruloplasmin
Chloride (Non-Direct)
Cholesterol
Cholinesterase
Cholinesterase (Butyryl)
CK-MB
CK-NAC
CO₂ Total
Cocaine metabolite
Complement Component 3
Complement Component 4
Copper
Creatinine (Jaffe)
Creatinine Enzymatic
CRP
CRP Full Range (0.3-160mg/l)
CRP High Sensitivity
Cystatin C
Digoxin
Ecstasy
EDDP
Ethanol
Ferritin
Fructosamine
G-6-PDH
Gamma GT
Gentamicin
GLDH
Glucose

Glucose/Fructose
Glutamate
Glutamine
Glutathione Peroxidase (Ransel)
Glutathione Reductase
Glycerol
Haptoglobin
HbA1c/Hb
HDL Cholesterol (Direct)
Heart-Type Fatty Acid Binding Protein (H-FABP)
Homocysteine
Hydroxybutyrate (Ranbut)
IgA
IgE
IgG
IgM
Iron
Lactate
LAP
LDH
LDL Cholesterol (Direct)
Lipase
Lipoprotein (a)
Lithium
L-Lactic Acid
Magnesium
Malic Acid
Methadone
Microalbumin
Myoglobin
NEFA (Non-Esterified Fatty Acids)
Opiates
Pancreatic Amylase
Phenobarbitol
Phenytoin
Phosphorus
Potassium (Non-Direct)
Rheumatoid Factor
Salicylate
sLDL
Sodium (Non-Direct)
Superoxide Dismutase (Ransod)
Theophylline
TIBC
Total Antioxidant Status
Total Protein
Transferrin
Transthyretin (Prealbumin)
Triglycerides
TxB Cardio
Urea
Uric Acid
Urinary Protein
Valproic Acid
Zinc

RX series

The RX series has been developed by Randox to meet the growing needs of clinical laboratory testing. Robust hardware combined with intuitive software ensures exceptionally low downtime with unrivalled precision and accuracy for results you can trust.



● RX monza

The RX monza is a compact semi-automated analyser with astonishing functionality, offering 192 channels, 79 of which have dedicated parameters. The RX monza will open exciting opportunities for both routine and specialised testing including coagulation testing.



● RX monaco

The RX monaco is a fully automated random access clinical analyser capable of carrying out 170 tests per hour. It provides unrivalled performance for low to mid volume testing.



● RX daytona+

Superior performance for mid volume laboratories. The RX daytona+ is capable of running 270 photometric tests per hour or 450 tests per hour including ISEs.



● RX imola

Efficiency for medium sized laboratories. The RX imola is a random access benchtop clinical analyser with a throughput of 560 tests per hour including ISEs.

RX series

Precision. Reliability. Accuracy.



Australia
Randox (Australia) Pty Ltd.
Tel: +61 (0) 2 9615 4640



Brazil
Randox Brasil Ltda.
Tel: +55 11 5181-2024



China
Randox Laboratories Ltd.
Tel: +86 021 6288 6240



Czech Republic
Randox Laboratories S.R.O.
Tel: +420 2 1115 1661



France
Laboratoires Randox
Tel: +33 (0) 130 18 96 80



Germany
Randox Laboratories GmbH
Tel: +49 (0) 2151/93 706-11



Hong Kong
Randox Laboratories Hong Kong Limited
Tel: +852 3595 0515



Italy
Randox Laboratories Ltd.
Tel: +39 06 9896 8954



India
Randox Laboratories India Pvt Ltd.
Tel: +91 22 6714 0600



Poland
Randox Laboratories Polska Sp. z o.o.
Tel: +48 22 862 1080



Portugal
Irlindox Laboratorios Quimica Analitica Ltda
Tel: +351 22 589 8320



Puerto Rico
Clinical Diagnostics of Puerto Rico, LLC
Tel: +1 787 701 7000



Republic of Ireland
Randox Teoranta
Tel: +353 7495 22600



Slovakia
Randox S.R.O.
Tel: +421 2 6381 3324



South Africa
Randox Laboratories SA (Pty) Ltd.
Tel: +27 (0) 11 312 3590



South Korea
Randox Korea
Tel: +82 (0) 31 478 3121



Spain
Laboratorios Randox S.L.
Tel: +34 93 475 09 64



Switzerland
Randox Laboratories Ltd. (Switzerland)
Tel: +41 41 810 48 89



USA
Randox Laboratories-US, Ltd.
Tel: +1 304 728 2890



Vietnam
Randox Laboratories Ltd.Vietnam
Tel: +84-8-39 11 09 04

RANDOX

Randox Laboratories Ltd, 55 Diamond Road, Crumlin, County Antrim, United Kingdom, BT29 4QY
T +44 (0) 2894422413 F +44 (0) 2894452912 E marketing@randox.com I www.randox.com